

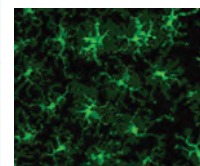
Inflammation/Immune Signaling Pathway

# Dendritic Cell

RESEARCH TOOLS

- Dendritic Cells
- NF- $\kappa$ B Pathways
- Inflammation
- Cytokines & Chemokines
- Screening Services for Inflammation & Immune Signaling Pathways

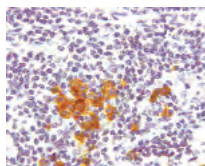
Description	Cat No	Format	Clone	Host	Species	Application
<b>Basophil</b>	DDX0030*	Purified	212H6.16	Mouse	H	Flow-CS, IF/ICC
	DDX0030A488*	Alexa Fluor® 488	212H6.16	Mouse	H	Flow-CS, IF/ICC
	DDX0030A546*	Alexa Fluor® 546	212H6.16	Mouse	H	IF/ICC
	DDX0030A647*	Alexa Fluor® 647	212H6.16	Mouse	H	Flow-CS, IF/ICC
<b>CD127/IL-7R</b>	DDX0700*	Purified	R34-34	Mouse	H	FA-Neut, Flow-CS, IP
	DDX0700A488*	Alexa Fluor® 488	R34-34	Mouse	H	Flow-CS
	DDX0700A546*	Alexa Fluor® 546	R34-34	Mouse	H	IHC-P
	DDX0700A647*	Alexa Fluor® 647	R34-34	Mouse	H	Flow-CS, IHC-P
<b>CD1a</b>	DDX0080*	Purified	214A9.01	Mouse	H	Flow-CS, IHC-Fr
	DDX0080A488*	Alexa Fluor® 488	214A9.01	Mouse	H	Flow-CS, IHC-Fr
	DDX0080A546*	Alexa Fluor® 546	214A9.01	Mouse	H	IHC-Fr
	DDX0080A647*	Alexa Fluor® 647	214A9.01	Mouse	H	IHC-Fr
	DDX0080B*	Biotin	214A9.01	Mouse	H	Flow-CS, IHC-Fr
<b>CD1a</b>	DDX0081*	Purified	201B5.08	Mouse	H	Flow-CS, IHC-Fr, WB
	DDX0081A488*	Alexa Fluor® 488	201B5.08	Mouse	H	Flow-CS, IHC-Fr
	DDX0081A546*	Alexa Fluor® 546	201B5.08	Mouse	H	Flow-CS, IHC-Fr
	DDX0081A647*	Alexa Fluor® 647	201B5.08	Mouse	H	Flow-CS, IHC-Fr
<b>CD40</b>	DDX0130*	Purified	G28-5	Mouse	H	FA-A, Flow-CS
<b>CD40</b>	DDX0131*	Purified	mAb89	Mouse	H	FA-A, Flow-CS, IHC-P
	DDX0131A488*	Alexa Fluor® 488	mAb89	Mouse	H	Flow-CS
<b>CD80/B7-1</b>	DDX0160*	Purified	mAb104	Mouse	H	Flow-CS
<b>CD205 (DEC-205)</b>	DDX0020*	Purified	NLDC-145	Rat	M	Flow-CS, IHC-P
	DDX0020A488*	Alexa Fluor® 488	NLDC-145	Rat	M	Flow-CS, IHC-P
	DDX0020B*	Biotin	NLDC-145	Rat	M	Flow-CS, IHC-P
<b>CD207/Langerin</b>	DDX0360*	Purified	808E10.01	Mouse	H, M, R	FA-Neut, Flow-CS, IHC-Fr
	DDX0360A488*	Alexa Fluor® 488	808E10.01	Mouse	H, M, R	Flow-CS, IHC-Fr
	DDX0360A546*	Alexa Fluor® 546	808E10.01	Mouse	H, M, R	IHC-Fr
	DDX0360B*	Biotin	808E10.01	Mouse	H, M, R	Flow-CS, IHC-Fr
<b>CD207/Langerin</b>	DDX0361*	Purified	310F7.02/HD26	Mouse	H, M, R	Flow-Intra, IHC-P, WB
	DDX0361A488*	Alexa Fluor® 488	310F7.02/HD26	Mouse	H, M, R	Flow-Intra, IHC-P
	DDX0361A546*	Alexa Fluor® 546	310F7.02/HD26	Mouse	H, M, R	IHC-P
	DDX0361A647*	Alexa Fluor® 647	310F7.02/HD26	Mouse	H, M, R	Flow-Intra, IHC-P
	DDX0361APC	APC	310F7.02/HD26	Mouse	H, M, R	Flow-Intra, IHC-P
	DDX0361B*	Biotin	310F7.02/HD26	Mouse	H, M, R	IHC-P, WB
	DDX0361PE	PE	310F7.02/HD26	Mouse	H, M, R	Flow-Intra, IHC-P
<b>CD207/Langerin</b>	DDX0362*	Purified	929F3.01	Rat	H, M, R	Flow-Intra, IF/ICC, IHC-Fr
	DDX0362A488*	Alexa Fluor® 488	929F3.01	Rat	H, M, R	Flow-Intra, IF/ICC, IHC-Fr
	DDX0362A546*	Alexa Fluor® 546	929F3.01	Rat	H, M, R	IF/ICC, IHC-Fr, IHC-P
	DDX0362A647*	Alexa Fluor® 647	929F3.01	Rat	H, M, R	Flow-Intra, IF/ICC, IHC-Fr
	DDX0362B*	Biotin	929F3.01	Rat	H, M, R	IF/ICC, IHC-Fr, IHC-P
<b>CD207/Langerin</b>	DDX0363*	Purified	DCGM4/122D5.03	Mouse	H	Flow-CS, IHC-P, WB
	DDX0363A488*	Alexa Fluor® 488	DCGM4/122D5.03	Mouse	H	Flow-CS, IHC-P
	DDX0363A546*	Alexa Fluor® 546	DCGM4/122D5.03	Mouse	H	IHC-P
	DDX0363A647*	Alexa Fluor® 647	DCGM4/122D5.03	Mouse	H	Flow-CS, IHC-P
	DDX0363B*	Biotin	DCGM4/122D5.03	Mouse	H	Flow-CS, IHC-P, WB

**CD207/Langerin  
(DDX0362)**

Immunofluorescence on mouse epidermal LC CD11c+ using 929F3.01.

Description	Cat No	Format	Clone	Host	Species	Application
<b>CD207/Langerin</b>	DDX0368*	Purified	306G9	Mouse	H, M	Flow-Intra, IF/ICC, IHC-P
	DDX0368A488*	Alexa Fluor® 488	306G9	Mouse	H, M	Flow-Intra, IHC-P
	DDX0368A546*	Alexa Fluor® 546	306G9	Mouse	H, M	IF/ICC, IHC-P
<b>CD207/Langerin</b>	DDX0370*	Purified	205C1	Mouse	M	Flow-Intra, WB
	DDX0370A488*	Alexa Fluor® 488	205C1	Mouse	M	Flow-Intra
	DDX0370A546*	Alexa Fluor® 546	205C1	Mouse	M	IHC-P
	DDX0370A647*	Alexa Fluor® 647	205C1	Mouse	M	Flow-Intra, IHC-P
	DDX0370B*	Biotin	205C1	Mouse	M	Flow-Intra, WB
<b>CD207/Langerin</b>	DDX0373*	Purified	923B7	Rat	H, M, R	Flow-CS, IHC-Fr
	DDX0373A488*	Alexa Fluor® 488	923B7	Rat	H, M, R	Flow-CS, IHC-Fr
	DDX0373A546*	Alexa Fluor® 546	923B7	Rat	H, M, R	IHC-Fr
<b>CD208/DC-LAMP</b>	DDX0190*	Purified	104G4	Mouse	H	Flow-Intra, IHC-Fr, IHC-P, WB
	DDX0190A488*	Alexa Fluor® 488	104G4	Mouse	H	Flow-Intra, IHC-Fr, IHC-P
	DDX0190A546*	Alexa Fluor® 546	104G4	Mouse	H	IHC-Fr, IHC-P
	DDX0190B*	Biotin	104G4	Mouse	H	Flow-Intra, IHC-Fr, IHC-P, WB
<b>CD208/DC-LAMP</b>	DDX0191*	Purified	1010E1.01	Rat	Multi-species	IHC-Fr, IHC-P
	DDX0191A488*	Alexa Fluor® 488	1010E1.01	Rat	Multi-species	IHC-Fr, IHC-P
	DDX0191A546*	Alexa Fluor® 546	1010E1.01	Rat	Multi-species	IHC-Fr, IHC-P
	DDX0191B*	Biotin	1010E1.01	Rat	Multi-species	IHC-Fr, IHC-P, WB
<b>CD208/DC-LAMP</b>	DDX0192*	Purified	1006F7.01	Rat	M	IHC-Fr
	DDX0192A488*	Alexa Fluor® 488	1006F7.01	Rat	M	Flow-CS
	DDX0192A647*	Alexa Fluor® 647	1006F7.01	Rat	M	Flow-CS
<b>CD208/DC-LAMP</b>	DDX0193*	Purified	109G3	Mouse	H	Flow-Intra, IHC-Fr
	DDX0193A488*	Alexa Fluor® 488	109G3	Mouse	H	Flow-Intra, IHC-Fr
	DDX0193A546*	Alexa Fluor® 546	109G3	Mouse	H	IHC-Fr
	DDX0193A647*	Alexa Fluor® 647	109G3	Mouse	H	IHC-Fr
	DDX0193B*	Biotin	109G3	Mouse	H	Flow-Intra, IHC-Fr
<b>CD21 isoform</b>	DDX0120*	Purified	7D6	Mouse	H	FA-A, IHC-Fr
<b>CD301/ASGPR</b>	DDX0010*	Purified	125A10.03	Mouse	H	Flow-CS, Flow-Intra, IHC-Fr
	DDX0010A488*	Alexa Fluor® 488	125A10.03	Mouse	H	Flow-CS, Flow-Intra, IHC-Fr
	DDX0010A546*	Alexa Fluor® 546	125A10.03	Mouse	H	IHC-Fr
	DDX0010A647*	Alexa Fluor® 647	125A10.03	Mouse	H	Flow-CS, Flow-Intra, IHC-Fr
	DDX0010B*	Biotin	125A10.03	Mouse	H	Flow-CS, Flow-Intra, IHC-Fr
<b>CD303/BDCA-2</b>	DDX0040*	Purified	108H10.03	Mouse	H	Flow-CS, IHC-Fr, IHC-P
	DDX0040A488*	Alexa Fluor® 488	108H10.03	Mouse	H	Flow-CS, IHC-Fr, IHC-P
	DDX0040A546*	Alexa Fluor® 546	108H10.03	Mouse	H	IHC-Fr, IHC-P
	DDX0040A647*	Alexa Fluor® 647	108H10.03	Mouse	H	Flow-CS, IHC-Fr, IHC-P
	DDX0040B*	Biotin	108H10.03	Mouse	H	Flow-CS, IHC-Fr, IHC-P
<b>CD303/BDCA-2</b>	DDX0041*	Purified	104C12.08	Mouse	H	Flow-CS, IHC-P
	DDX0041A488*	Alexa Fluor® 488	104C12.08	Mouse	H	Flow-CS, IHC-P
	DDX0041A546*	Alexa Fluor® 546	104C12.08	Mouse	H	IHC-P
	DDX0041A647*	Alexa Fluor® 647	104C12.08	Mouse	H	Flow-CS, IHC-P
	DDX0041B*	Biotin	104C12.08	Mouse	H	Flow-CS, IHC-P

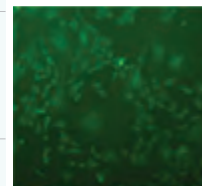
**CD303/BDCA-2**  
(DDX0043)



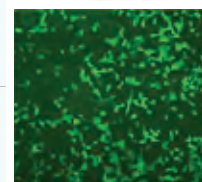
Paraffin-embedded tonsil human pDCs probed with DDX0043.

Description	Cat No	Format	Clone	Host	Species	Application
<b>CD303/BDCA-2</b>	DDX0042*	Purified	110H7.05	Mouse	H	FA-Neut, Flow-CS, IHC-P
	DDX0042A488*	Alexa Fluor® 488	110H7.05	Mouse	H	Flow-CS
	DDX0042A546*	Alexa Fluor® 546	110H7.05	Mouse	H	IF/ICC
	DDX0042A647*	Alexa Fluor® 647	110H7.05	Mouse	H	Flow-CS
	DDX0042B*	Biotin	110H7.05	Mouse	H	FA-Neut, Flow-CS, IHC-P
<b>CD303/BDCA-2</b>	DDX0043*	Purified	124B3.13	Mouse	H, M, R	Flow-Intra, IHC-P
	DDX0043A488*	Alexa Fluor® 488	124B3.13	Mouse	H, M, R	Flow-Intra, IHC-P
	DDX0043A546*	Alexa Fluor® 546	124B3.13	Mouse	H, M, R	IHC-P
	DDX0043A647*	Alexa Fluor® 647	124B3.13	Mouse	H, M, R	Flow-Intra, IHC-P
	DDX0043B*	Biotin	124B3.13	Mouse	H, M, R	Flow-Intra, IHC-P
<b>Chikungunya Virus</b>	DDX9100*	Purified	E26D9	Human	Virus	FA-Neut, IF
	<b>NEW</b> DDX9100A488*	Alexa Fluor® 488	E26D9	Human	Virus	FA-Neut, IF
	<b>NEW</b> DDX9100A546*	Alexa Fluor® 546	E26D9	Human	Virus	FA-Neut, IF
	<b>NEW</b> DDX9100A647*	Alexa Fluor® 647	E26D9	Human	Virus	FA-Neut, IF
<b>Chikungunya Virus</b>	DDX9102*	Purified	E26C4	Human	Virus	FA-Neut, IF
	<b>NEW</b> DDX9102A488*	Alexa Fluor® 488	E26C4	Human	Virus	FA-Neut, IF
	<b>NEW</b> DDX9102A546*	Alexa Fluor® 546	E26C4	Human	Virus	FA-Neut, IF
	<b>NEW</b> DDX9102A647*	Alexa Fluor® 647	E26C4	Human	Virus	FA-Neut, IF
<b>Chikungunya Virus</b>	DDX9103*	Purified	E26G8	Human	Virus	FA-Neut, IF
	<b>NEW</b> DDX9103A488*	Alexa Fluor® 488	E26G8	Human	Virus	FA-Neut, IF
	<b>NEW</b> DDX9103A546*	Alexa Fluor® 546	E26G8	Human	Virus	FA-Neut, IF
	<b>NEW</b> DDX9103A647*	Alexa Fluor® 647	E26G8	Human	Virus	FA-Neut, IF
<b>DCIR</b>	DDX0180*	Purified	111F8.04	Mouse	H	Flow-CS, IHC-Fr
	DDX0180A488*	Alexa Fluor® 488	111F8.04	Mouse	H	Flow-CS, IHC-Fr
	DDX0180A546*	Alexa Fluor® 546	111F8.04	Mouse	H	IHC-Fr
	DDX0180B*	Biotin	111F8.04	Mouse	H	Flow-CS, IHC-Fr
	DDX0180FITC	FITC	111F8.04	Mouse	H	Flow-CS, IHC-Fr
	DDX0180PE	PE	111F8.04	Mouse	H	Flow-CS, IHC-Fr
<b>DC-SIGN</b>	DDX0202*	Purified	102E11.06	Mouse	H	Flow-CS, Flow-Intra, IHC-Fr
	DDX0202A488*	Alexa Fluor® 488	102E11.06	Mouse	H	Flow-CS, Flow-Intra, IHC-Fr
	DDX0202A546*	Alexa Fluor® 546	102E11.06	Mouse	H	IHC-Fr
	DDX0202B*	Biotin	102E11.06	Mouse	H	Flow-CS, Flow-Intra, IHC-Fr
<b>DC-SIGN</b>	DDX0203*	Purified	103G2.07	Mouse	H	Flow-CS, Flow-Intra, IHC-Fr
	DDX0203A488*	Alexa Fluor® 488	103G2.07	Mouse	H	Flow-CS, Flow-Intra, IHC-Fr
	DDX0203A546*	Alexa Fluor® 546	103G2.07	Mouse	H	IHC-Fr
	DDX0203A647*	Alexa Fluor® 647	103G2.07	Mouse	H	Flow-CS, Flow-Intra, IHC-Fr
	DDX0203B*	Biotin	103G2.07	Mouse	H	Flow-CS, Flow-Intra, IHC-Fr
<b>DC-SIGN</b>	DDX0204*	Purified	108C7.01	Mouse	H	Flow-CS, Flow-Intra, IHC-Fr
	DDX0204A488*	Alexa Fluor® 488	108C7.01	Mouse	H	Flow-CS, Flow-Intra, IHC-Fr
	DDX0204A546*	Alexa Fluor® 546	108C7.01	Mouse	H	IHC-Fr
	DDX0204A647*	Alexa Fluor® 647	108C7.01	Mouse	H	Flow-CS, Flow-Intra, IHC-Fr
	DDX0204B*	Biotin	108C7.01	Mouse	H	Flow-CS, Flow-Intra, IHC-Fr

Chikungunya Virus (DDX9100)



Control

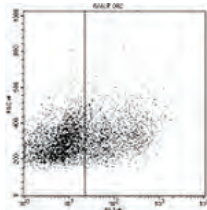


CHIKV-infected

mAb E26D9 was used at a concentration of 1 ug/ml.

Description	Cat No	Format	Clone	Host	Species	Application
<b>DC-SIGN</b>	DDX0205*	Purified	102F10.04	Mouse	H	Flow-CS, Flow-Intra, IHC-Fr
	DDX0205A488*	Alexa Fluor® 488	102F10.04	Mouse	H	Flow-CS, Flow-Intra, IHC-Fr
	DDX0205A546*	Alexa Fluor® 546	102F10.04	Mouse	H	IHC-Fr
<b>DC-SIGN-like</b>	DDX0200*	Purified	118A8.05	Mouse	H	Flow-CS, IF/ICC, IHC
	DDX0200A488*	Alexa Fluor® 488	118A8.05	Mouse	H	Flow-CS, IF/ICC, IHC
	DDX0200A546*	Alexa Fluor® 546	118A8.05	Mouse	H	IF/ICC, IHC
	DDX0200A647*	Alexa Fluor® 647	118A8.05	Mouse	H	Flow-CS, IF/ICC, IHC
	DDX0200B*	Biotin	118A8.05	Mouse	H	Flow-CS
<b>Dectin-2</b> <span style="color:red">NEW</span>	IMG-6682A	Purified	IMG3D1	Mouse	Multi-species	Flow-CS, IHC-P, WB
	IMG-6682AF647	Purified	IMG3D1	Mouse	Multi-species	Flow-CS, IHC-P, WB
<b>DORA/IgSF6</b>	DDX0220*	Purified	104A10.01	Mouse	H, M	Flow-CS
	DDX0220A488*	Alexa Fluor® 488	104A10.01	Mouse	H, M	Flow-CS
	DDX0220A546*	Alexa Fluor® 546	104A10.01	Mouse	H, M	Flow-CS, IF/ICC
	DDX0220A647*	Alexa Fluor® 647	104A10.01	Mouse	H, M	Flow-CS
	DDX0220B*	Biotin	104A10.01	Mouse	H, M	Flow-CS
<b>DFD3</b>	DDX0230*	Purified	36H2	Rat	H	Flow-CS, IP, WB
	DDX0230A488*	Alexa Fluor® 488	36H2	Rat	H	Flow-CS
	DDX0230A546*	Alexa Fluor® 546	36H2	Rat	H	IHC-P
	DDX0230A647*	Alexa Fluor® 647	36H2	Rat	H	Flow-CS
	DDX0230B*	Biotin	36H2	Rat	H	Flow-CS, IP, WB
<b>HLADR</b> <span style="color:red">NEW</span>	IMG-6681AF488	Alexa Fluor® 488	L243	Mouse	Multi-species	Flow-CS
	IMG-6681AF647	Alexa Fluor® 647	L243	Mouse	Multi-species	Flow-CS
	IMG-6681D	PE	L243	Mouse	Multi-species	Flow-CS
	IMG-6681H	PerCP-Cy5.5	L243	Mouse	Multi-species	Flow-CS
<b>HLADR</b> <span style="color:red">NEW</span>	IMG-80050	T.C. Sup.	CR3/43	Mouse	H	IHC-P
<b>gIFN-R/CD119</b>	DDX0001*	Purified	A6C5	Mouse	H	FA-A, IF/ICC, IHC-P
<b>HME-MMP12</b>	DDX0280*	Purified	603E6.22	Mouse	H	IHC-Fr
	DDX0280B*	Biotin	603E6.22	Mouse	H	IHC-Fr
<b>HME-MMP12</b>	DDX0281*	Purified	706F9.01	Mouse	H	Peptide ELISA*
	DDX0281B*	Biotin	706F9.01	Mouse	H	Peptide ELISA*
	DDX0281HRPO*	HRP	706F9.01	Mouse	H	Peptide ELISA*
<b>HME-MMP12</b>	DDX0282*	Purified	705D10.11	Mouse	H	ELISA, WB
<b>HME-MMP12</b>	DDX0284*	Purified	701E4.03	Mouse	H	Peptide ELISA*
<b>IL3-Ra/CD123</b>	DDX0300*	Purified	107D2.08	Mouse	H	Flow-CS, IHC-Fr, IHC-P, IP
	DDX0300A488*	Alexa Fluor® 488	107D2.08	Mouse	H	Flow-CS, IHC-Fr, IHC-P
	DDX0300A546*	Alexa Fluor® 546	107D2.08	Mouse	H	IHC-Fr, IHC-P
	DDX0300A647*	Alexa Fluor® 647	107D2.08	Mouse	H	Flow-CS, IHC-Fr, IHC-P
<b>ILT7/CD85g</b> <span style="color:red">NEW</span>	IMG-6674A	Purified	17G10.2	Mouse	H	Flow-CS
	IMG-6674AF647	Alexa Fluor® 647	17G10.2	Mouse	H	Flow-CS
	IMG-6674D	PE	17G10.2	Mouse	H	Flow-CS
	IMG-6674E	Azide-Free	17G10.2	Mouse	H	FA-Neut, Flow-CS
<b>Influenza M1/</b>	DDX0270*	Purified	405H1.01	Mouse	H	ELISA, Flow-Intra
	DDX0270A488*	Alexa Fluor® 488	405H1.01	Mouse	H	FA-A, Flow-Intra
	DDX0270A647*	Alexa Fluor® 647	405H1.01	Mouse	H	Flow-Intra
	DDX0270B*	Biotin	405H1.01	Mouse	H	ELISA
<b>IRAK-4</b>	DDX0341*	Purified	7D8	Mouse	H	IF/ICC, WB
	DDX0341A488*	Alexa Fluor® 488	7D8	Mouse	H	IF/ICC
	DDX0341A546*	Alexa Fluor® 546	7D8	Mouse	H	IF/ICC

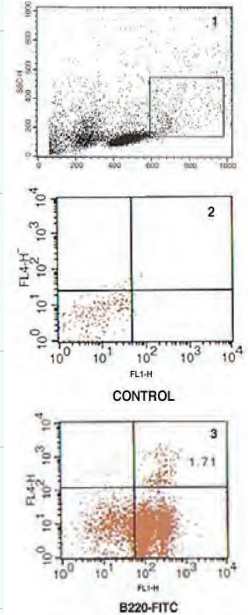
**DORA/IgSF6**  
(DDX0220)



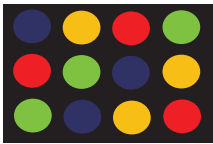
Flow Cytometry staining:  
Purified 104A10.01+goat anti mouse FITC probing COP5 fibroblasts transiently transfected with human DORA cDNA.

Description	Cat No	Format	Clone	Host	Species	Application
<b>MIP-3a/CD196</b>	DDX0420*	Purified	206D9.05	Mouse	H	FA-Neut, IHC-Fr, IHC-P, WB
	DDX0420HRPO*	HRP	206D9.05	Mouse	H	ELISA
<b>MIP-3a/CD196</b>	DDX0430*	Purified	319F6.06	Mouse	H	FA-Neut, IHC-P
<b>MIP-3a/CD196</b>	DDX0431*	Purified	308B7.06	Mouse	H	IHC-P
	DDX0431HRPO*	HRP	308B7.06	Mouse	H	IHC-P
<b>Neuropilin-1</b>	DDX0440*	Purified	211H6.01	Mouse	H	Flow-CS, IHC-Fr
	DDX0440A488*	Alexa Fluor® 488	211H6.01	Mouse	H	Flow-CS, IHC-Fr
	DDX0440A647*	Alexa Fluor® 647	211H6.01	Mouse	H	Flow-CS, IHC-Fr
<b>pDC/IPC</b>	DDX0390*	Purified	120G8.04	Rat	M	Flow-CS, Flow-Intra, IHC-Fr, <i>in vivo</i> depletion
	DDX0390A488*	Alexa Fluor® 488	120G8.04	Rat	M	Flow-CS, IHC-Fr, <i>in vivo</i> depletion
	DDX0390A546*	Alexa Fluor® 546	120G8.04	Rat	M	IHC-Fr
	DDX0390A647*	Alexa Fluor® 647	120G8.04	Rat	M	Flow-CS, IHC-Fr, <i>in vivo</i> depletion
	DDX0390APC	APC	120G8.04	Rat	M	Flow-CS, Flow-Intra, IHC-Fr
	DDX0390B*	Biotin	120G8.04	Rat	M	Flow-CS, <i>in vivo</i> depletion
	DDX0390FITC	FITC	120G8.04	Rat	M	Flow-CS, Flow-Intra, IHC-Fr
	DDX0390PE	PE	120G8.04	Rat	M	Flow-CS, Flow-Intra, IHC-Fr
<b>Sema-6A</b>	DDX0462*	Purified	104B3	Mouse	H	IHC-Fr
<b>Sema-6A</b>	DDX0463*	Purified	118E7	Mouse	H	Flow-CS, IHC
	DDX0463A488*	Alexa Fluor® 488	118E7	Mouse	H	Flow-CS, IHC
	DDX0463A647*	Alexa Fluor® 647	118E7	Mouse	H	Flow-CS, IHC
<b>TLR3/CD283</b>	DDX0470*	Purified	619F7.06	Mouse	H	Flow-Intra, IF/ICC, IHC-Fr, IHC-P
	DDX0470A488*	Alexa Fluor® 488	619F7.06	Mouse	H	Flow-Intra, IF/ICC, IHC-Fr, IHC-P
	DDX0470A546*	Alexa Fluor® 546	619F7.06	Mouse	H	IF/ICC, IHC-P
	DDX0470A647*	Alexa Fluor® 647	619F7.06	Mouse	H	Flow-Intra, IF/ICC, IHC-Fr, IHC-P
	DDX0470B*	Biotin	619F7.06	Mouse	H	Flow-Intra, IHC-Fr, WB
<b>TLR3/CD283</b>	DDX0474*	Purified	713E4.06	Mouse	Multi-species	Flow-Intra, IHC-P
	DDX0474A488*	Alexa Fluor® 488	713E4.06	Mouse	Multi-species	Flow-Intra, IHC-P
	DDX0474A546*	Alexa Fluor® 546	713E4.06	Mouse	Multi-species	Flow-Intra, IHC-P
	DDX0474A647*	Alexa Fluor® 647	713E4.06	Mouse	Multi-species	Flow-Intra, IHC-P
	DDX0474B*	Biotin	713E4.06	Mouse	Multi-species	Flow-Intra, IHC-P
<b>TLR3/CD283</b>	DDX0475*	Purified	716G10.15	Mouse	H, M, R	Flow-Intra, IHC-Fr
	DDX0475A488*	Alexa Fluor® 488	716G10.15	Mouse	H, M, R	Flow-Intra, IHC-Fr
	DDX0475A546*	Alexa Fluor® 546	716G10.15	Mouse	H, M, R	IHC-Fr
	DDX0475A647*	Alexa Fluor® 647	716G10.15	Mouse	H, M, R	Flow-Intra, IHC-Fr
	DDX0475B*	Biotin	716G10.15	Mouse	H, M, R	Flow-Intra, IHC-Fr
<b>TLR7</b>	<b>NEW</b> IMG-6675A	Purified	IMG4G6	Mouse	H	Flow-Intra, WB
	<b>NEW</b> IMG-6675AF488	Alexa Fluor® 488	IMG4G6	Mouse	H	Flow-Intra, WB
	<b>NEW</b> IMG-6675D	PE	IMG4G6	Mouse	H	Flow-Intra, WB
<b>TLR8/CD288</b>	DDX0480*	Purified	303F1.14	Mouse	H	Flow-Intra, IF/ICC, IHC-Fr, WB
	DDX0480A488*	Alexa Fluor® 488	303F1.14	Mouse	H	Flow-Intra, IF/ICC, IHC-Fr, WB
	DDX0480A546*	Alexa Fluor® 546	303F1.14	Mouse	H	IF/ICC, IHC-Fr
	DDX0480A647*	Alexa Fluor® 647	303F1.14	Mouse	H	Flow-Intra, IF/ICC, IHC-Fr, WB
	DDX0480B*	Biotin	303F1.14	Mouse	H	Flow-Intra, IF/ICC, IHC-Fr, WB
<b>TLR8/CD288</b>	DDX0483*	Purified	112H7.15	Rat	H	Flow-Intra, IF/ICC, WB
	DDX0483A488*	Alexa Fluor® 488	112H7.15	Rat	H	Flow-Intra, IF/ICC, WB
	DDX0483A546*	Alexa Fluor® 546	112H7.15	Rat	H	IF/ICC
	DDX0483A647*	Alexa Fluor® 647	112H7.15	Rat	H	Flow-Intra, IF/ICC, WB
	DDX0483B*	Biotin	112H7.15	Rat	H	Flow-Intra, IF/ICC, WB

**pDC/IPC**  
(DDX0390)



CD19 & CD3epsilon depleted mouse spleen cells were gated for pDC cells (Fig. 1) and double stained using B220-FITC, and anti-pDC-APC (DDX0390APC) at 1ug/ml (Fig. 3). Appropriate isotype control shown in Fig. 2



# Screening Services for Inflammation & Immune Signaling Pathways

IMGENEX is a recognized leader in the provision of tools for studying cellular responses. We have experience in the manufacturing of reagents and development of applications and assay systems for studying pathways of cellular response, particularly pathways related to Immune Receptors with a focus on Toll-like Receptors. Over the past several years IMGENEX has developed a broad product portfolio in the area of Toll-like Receptors (TLRs), and related areas of Inflammation and Immunology providing advanced research tools to accelerate the increasing volume of applied research in these areas of biology.

focus for companies with intent for commercial development of diagnostics for monitoring response, or interested in therapeutics as prophylactic or curative drugs.

To help meet these objectives we now offer our new IMGENEX Screening Services as a partner with expertise in cell signaling areas, as evidenced by the portfolio of products already commercialized. We are recognized as authorities in cell signaling pathways especially in the area of NF-κB related signaling pathways which are directly related to Inflammation and Immune Signaling Pathways.

In parallel with their critical role in shaping and regulating cellular and immune responses, is the recognition of Toll-like Receptors as tunable targets to control these responses. Identifying new, more specific and more potent TLR agonists or antagonists is an area of

Through IMGENEX Screening Services our objective is to become your partner in accelerating your research and product development efforts and meeting your specific objectives efficiently and economically in accord with the scope, resources, and timetable structure desired.

## Partnering Information & Initiation of IMGENEX Screening Services Project

### 1 Contact IMGENEX Screening Services

Tel: 858-642-0978 x 244  
Toll-Free: 888-723-4363 x 224  
info@imgenex.com

### 2 Assurance of Confidentiality

Exchange NDA assures confidentiality

### 3 Discussion of Overall Project

Project Scope, Timetable, Objectives

### 4 IMGENEX provides SOW-Statement of Work

Systems, Assays, Reagents Planned

Data Analysis Formats and Requirements

Timetable & Milestones  
Quotation Presentation

### 5 In Depth Discussion and Project Review

Review and revise SOW as agreed upon

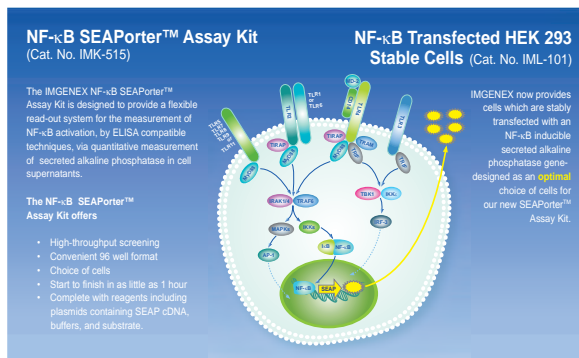
### 6 Agreement and Go Ahead

Start partnering with IMGENEX

Toll-like Receptor	Key Ligands	Anti-Microbial	Adaptor Molecules	Cell Location	Signaling Pathway
TLR1	Lipids, Disaccharide Lipopeptides, Peptidoglycan	✓	✓	✓	✓
TLR2	Lipids, Peptidoglycan	✓	✓	✓	✓
TLR3	dsRNA Poly(I:C)	✓	✓	✓	✓
TLR4	LPS	✓	✓	✓	✓
TLR5	Flagellin	✓	✓	✓	✓
TLR6	Lipids, Disaccharide Lipopeptides, Peptidoglycan	✓	✓	✓	✓
TLR7	ssRNA	✓	✓	✓	✓
TLR8	ssRNA	✓	✓	✓	✓
TLR9	CpG-DNA	✓	✓	✓	✓
TLR10	Oxphos	✓	✓	✓	✓
TLR11	Uroporphyrin B	✓	✓	✓	✓
TLR12	?	✓	✓	✓	✓
TLR13	?	✓	✓	✓	✓

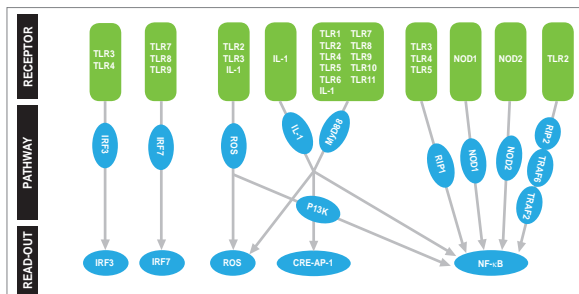
## TLR & Inflammatory Ligand Discovery Screen

- Identification of TLR ligands in cell culture
- Identification of TLR ligands in tissue fluids
- Identification of TLR specific ligands



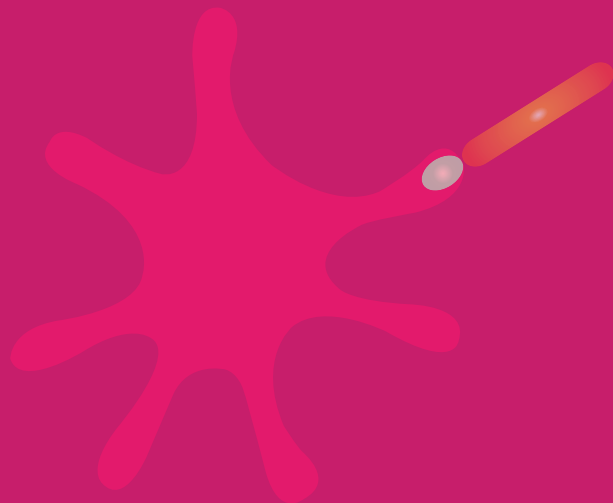
## TLR & Inflammatory Ligand Activation Screen

- Pathway Analysis
- Activation Potential



## TLR & Inflammatory Pathway Analysis

- Mediator Cascade Analysis
- Cytokines
- Chemokines
- Prostaglandins
- Interferons



**[www.imgenex.com](http://www.imgenex.com)**

---

11175 Flintkote Avenue, Suite E

San Diego, CA 92121

**Toll-free** (888) 723-4363

**Fax** (858) 642-0937

**Email** [info@imgenex.com](mailto:info@imgenex.com)

[www.imgenex.com](http://www.imgenex.com)